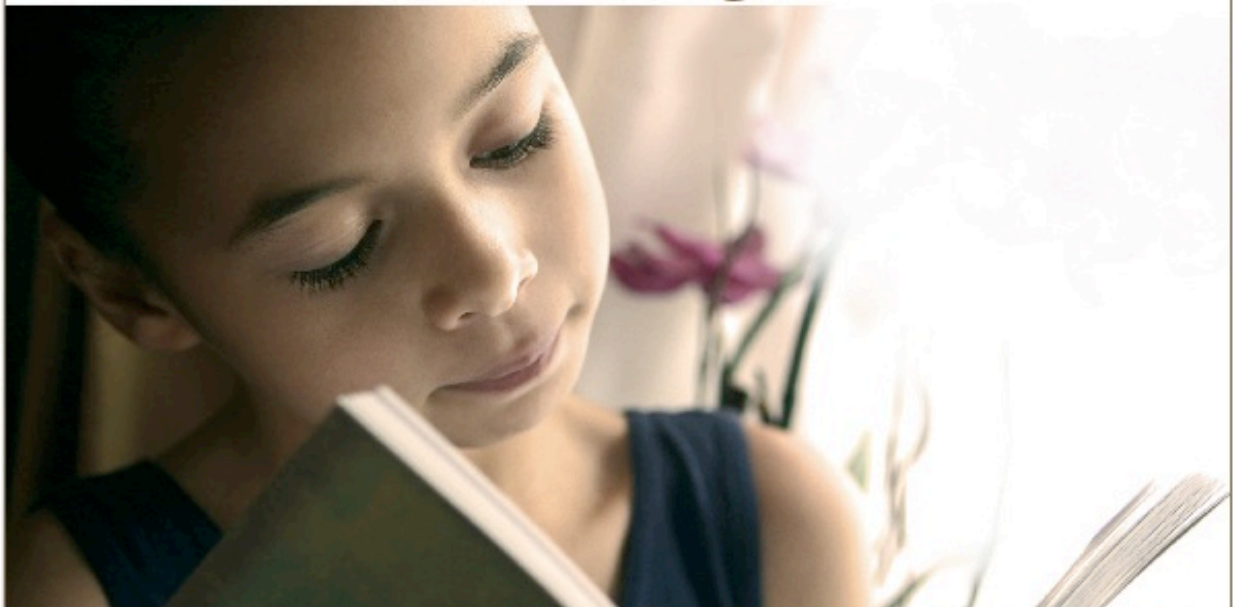


Seeds of Knowledge



SCHOOL | ECOLE

MONTESORI
SEEDS OF KNOWLEDGE





ELEMENTARY SCHOOL PROGRAM (6 TO 12 YEARS OLD)

☉ Language

- ▶ Grammar:
 - study of the formation of words (reinforces spelling);
 - study of the nature of words (nouns-adjectives-articles-prepositions-conjunctions, adverbs, pronouns, verbs, interjections);
 - study of the nature of sentences (simple sentences - complex sentences).
- ▶ Spelling:
 - study of phonemes;
 - silent dictation;
 - spelling rules.
- ▶ Conjugation:
 - study of pronouns, tenses, groups and patterns;
 - active voice and passive voice;
 - ordinary form, interrogative, negative, negative interrogative;
 - study of the forms of the verb "to be " and "to have".
- ▶ Reading:
 - reading in whispers;
 - reading aloud.
- ▶ Writing:
 - development of vocabulary;
 - expression: writing, dramaturgy;
 - study of styles.
- ▶ Speaking:
 - development of vocabulary;
 - speak to the class.

☉ Mathematics

- ▶ Foundation of numbers:
 - arithmetic foundations;
 - the hierarchy of numbers;
 - multiple and dividers;
 - squares and cubes;
 - divisibility.
- ▶ Calculations and operations:
 - multi-digit multiplication;
 - multi-digit division;
 - powers.



- ▶ How to count:
 - ordinary fraction;
 - decimal numbers;
 - non-decimal numbers;
 - count with signs;
 - numerical relationships and proportions.

- ▶ Polynomials:
 - squares of polynomials,
 - cubes of polynomials;
 - square root;
 - cubic root.

- ▶ Algebra:
 - introduction to algebra;
 - concept of the equation;
 - search for the variable;
 - problem-solving.

- ▶ Application:
 - written assignments;
 - measure length, volume, temperature, mass, strength.

● Geometry

- ▶ Basic geometric elements:
 - lines: types, locations, intersecting lines;
 - angles: concept, parts, varieties, measuring angles;
 - polygons: types, parts, features;
 - circles: concept, relationships with a straight line, relationship between two circles;
 - solid: types, parts, surface calculation.

- ▶ Relations:
 - congruence, similitude, equivalence;
 - Pythagoras et Euclid.

- ▶ Measures:
 - length;
 - surface;
 - volume.

- ▶ Constructing using ruler and compass:
 - using a ruler and compass;
 - fundamental constructions;
 - construction of triangles;
 - constructing the center of the circle;
 - division of a segment according to a given ratio;
 - construct a perpendicular through a given point.



● Geography

- ▶ La nature of things:
 - the orbit of the planets;
 - the axis of rotation of the earth;
 - extinction of a star;
 - speed of rotation of the planets;
 - particles: solution, suspension, emulsion, precipitate;
 - 3 states of matter: solid, liquid, gas
 - subdivisions of other states of matter;
 - force of attraction and gravity.

- ▶ Structure of Earth:
 - the Earth's layers and their functions;
 - the movements of Earth's layers.

- ▶ The sun and the earth:
 - the solar system;
 - rotation;
 - the revolution of the earth.

- ▶ The activity of water:
 - the river,
 - erosion;
 - the cycle of water.

- ▶ Life on earth:
 - expansion of vegetation;
 - man in various climatic zones.

- ▶ Economic life:
 - economic geography;
 - interdependencies.

- ▶ Political geography:
 - borders;
 - continents, countries, towns, capitals;
 - flags.

● History

- ▶ Natural history:
 - the origin of life on earth and its evolution;
 - the various eras;



- ▶ The history of mankind:
 - the history of human beings;
 - the basic needs of human beings;
 - evolution of the human species;
 - the importance of hand;
 - three periods in history: nomadic, agricultural, urban;
 - Migration: hunting, conquests.
 - the major civilizations.

- ▶ The concept of time:
 - the calendar: century, year, month, day;
 - the watch.

● Biology

- ▶ Botany:
 - parts of the plant;
 - functions of the plant;
 - kinds of plants;
 - the reproduction of plants;
 - the classification of plants.

- ▶ Zoology:
 - animals and their environment;
 - bodily functions of vertebrates;
 - animal classification;
 - study of the human body.

- ▶ Ecology:
 - interaction of biotic and abiotic elements;
 - ecosystems of the oceans;
 - the function of every living being.

● Music

- ▶ Singing;
- ▶ Education of the ear;
- ▶ Rhythm and movement;
- ▶ The study notes on a staff;
- ▶ The study of sounds of the notes;
- ▶ The diversity of music.

● Sport

- ▶ Control the movements of his body throw and catch, jump rope
- ▶ Team games;
- ▶ Seasonal sports.



MONTESSORI PEDAGOGY

To address the critical issues of our time, children must imperatively receive an education that promotes the full development of their potential for initiative, creativity, independence, inner discipline and self confidence. With this in mind, we have chosen the Montessori method which has the following success criteria:

Criterion 1 : **Sense of ownership and responsibility that children have for their school environment.**

In our classrooms, the environment is theirs, and theirs only. Everything is tailored to them and their physical, intellectual and emotional needs. The teacher does not own anything, not even a suitably sized table or chair. It is mainly the children who maintain order in the environment and tend to its maintenance daily. The children also arrange the materials on the shelves, who clean the tables, and take care of the plants and animals.

Criterion 2 : **Sense of responsibility of children amongst each other.**

We leave as much freedom as possible to the children's social relations. The teacher only intervenes to enforce individual rights. The natural interest that the child feels for others and his desire to help them thus develops spontaneously. The children's reactions when one of them disturbs the environment demonstrates their tolerance and understanding of one vis-à-vis others. Similarly, when a child breaks something, the others rush to help him and clean up, and demonstrate the same sympathy.

Criterion 3: **Having children of different ages in the same group.**

The third criterion is to have children of different ages in each environment. This means that each child spends approximately three years in an environment where a third of his classmates are renewed every year. This is very important, because the oldest children help the little ones and act as role models.

« The communication between the two is rarely found between the adult and the young child ... The depth of this feeling of protection and admiration is hard to believe ¹. »

¹ *The Absorbant Mind, Maria Montessori, Clio Press 1989*



The older child is very sensitive to the nature and degree of help the younger child needs.

« They do not help them like we would ... they respect the other's efforts and assist only when really necessary. This intuitive respect sheds light on an essential need of the child: not to be helped unnecessarily.² »

Although the older children help the younger ones in a Montessori environment, it does not delay or impede their progress or freedom.

« One might fear that a child of five who teaches a younger one may fall behind in his own development. On the one hand, it does not "teach" permanently, only when he desires it. On the other hand, it allows him to improve his knowledge, analyze and reorganize it before moving on to something else. He is largely rewarded for the time devoted to this activity³. »

Although Maria Montessori does not favor group work, she believes that education plays a collective role in preparing children for life.

² *The Absorbant Mind, Maria Montessori, Clio Press 1989*

³ *id.*



GENERAL TERMS

SCHEDULE-LUNCH-SNACK

Day	Morning	Lunch	Afternoon
Monday	8h00 - 12h00	12h00 - 12h45	12h45 - 16h00
Tuesday	8h00 - 12h00	12h00 - 12h45	12h45 - 16h00
Wednesday	8h00 - 12h00		
Thursday	8h00 - 12h00	12h00 - 12h45	12h45 - 16h00
Friday	8h00 - 12h00		

Organization of a typical day

8h00 - 11h45	Montessori activities
11h45 - 12h00	Preparation for lunch
12h00 - 12h45	Lunch
12h45 - 13h30	Recreation outdoors or indoors depending on the weather
13h30 - 15h50	Montessori activities
15h50 - 16h00	Preparation for departure

Note

- The supervision of meals and recreation is provided by adults.

Lunch

- Hot meals are prepared by DSR located at One Business Center in Rolle. DSR is labeled "Fourchette Verte". These meals are brought to the school in thermos containers. The weekly menu is posted in the locker room. Appropriate behaviour during the meal is part of the education of "grace and courtesy," or otherwise "good manners".
- At lunchtime, the children set the table, serve the meal, serve their plates, and clean up before going outside to play. The provision of food with the "Fourchette Verte" label is part of a vision to promote each child's optimal physical development, but also to make the children aware from an early age of the importance of healthy eating.



Snack

- In classroom, children can eat a fruit in the morning. A small table is provided for this purpose. Besides fruit, there are no other snacks. Each child may bring three fruits per week and share them with his classmates.

Note

- If a child is allergic to certain foods, parents must inform the teaching staff who will ensure the safety of the environment. A list of allergies is displayed in each classroom as a reminder to all.

🔗 WORKSHOP

At the end of the school day, students can take part in creative workshops. The themes of the workshops vary each afternoon of the week. A snack is provided before the workshop.

Day	Schedule	Price
Monday	16h00 - 18h00	CHF 60.- (snack+workshop)
Tuesday	16h00 - 18h00	CHF 60.- (snack+workshop)
Wednesday		N/A
Thursday	16h00 - 18h00	CHF 60.- (snack+workshop)
Friday		N/A

🔗 REGISTRATION

- Registrations are taken only for a full academic year (10 months). The school year is identical to the calendar of private schools in the canton of Vaud. Registration information is kept in confidential files. They remain confidential and no person may disclose them or be informed in writing or verbally without the written consent of the holders of parental authority.
- Once the school receives the registration form duly completed and signed, a confirmation of admission is sent to parents. The confirmation of admission is accompanied by a payment slip. The registration fee of CHF 1'000.- must be paid for each new student upon receipt of invoice. This amount covers the administrative costs of admission and is non-refundable. Any other and further costs for breach of contract is expressly reserved by the school's management.
- Each new school year gives rise to a mandatory re-registration. Subsequently, a place is automatically reserved for students upon receiving the signed registration form. Enrollment and re-registrations by fax or email are not accepted.



- The school reserves the right not to accept the registration of a student if payments due to the school for the current academic year are not paid in full by June 30.

• BREACH OF CONTRACT

- Cancellations made after June 30, prior to the beginning of the following school year, shall be subject to full payment of the following school year's first quarter.
- The school must be notified of any departure in writing at least two months before the end of the quarter. Otherwise, the school will require a compensation equivalent to the full tuition amount of the next quarter. But in all cases, payment of the current quarter is due in full.

• ARRIVAL AND DEPARTURE

- The child must be accompanied by an adult when he arrives and the adult must notify the staff of the child's arrival. The same procedure is required for the departure of a student. A handshake between the child and the teacher allows good monitoring of this rule in addition of teaching the notion of welcoming someone. When someone other than parents must pick up the child, the parents must notify the Seeds of Knowledge Montessori School in advance. A list of people likely to pick up the child is to be provided to the school at the beginning of each year.
- Upon arrival or departure, parents are asked not to undress or dress their child, as this activity is part of the learning of everyday life activities. In the morning, the child has ample time to do everything required to get undressed. By late afternoon, time is set aside to allow children to dress themselves as much as possible, according to climate demands.
- Each child has a wall hook with his name where he can hang clothes, a bag in which he can put a change of clothes and a rack for storing his shoes and rain or winter boots.

• ILLNESS OR SERIOUS ACCIDENT

- As noted on the medical form signed by the parents (Appendix 4), in case of illness or serious accident, the school will make arrangements for the health and safety of all. Parents will be notified immediately and, if they are not reachable immediately, we will get hold of a person to contact in case of emergency on the list provided by the parents at the beginning of the school year.
- The environment of young children is conducive to disease transmission, despite all measures taken to ensure that the premises adhere to strict hygiene rules. To this effect, the Montessori School Seeds of Knowledge Montessori School can accommodate a child subject to a



contagious disease or suffering from weakness due to illness. When circumstances indicate that a child is sick, parents are notified as soon as possible so they can pick up their sick child.

● INVOLVEMENT OF PARENTS

- Various meetings are held with parents during the school year. These meetings aim to establish a collaborative relationship with parents ensuring that their questions about the ins and outs of the Montessori program are answered.

● ADMINISTRATION OF MEDICINE

- The designated staff member **cannot administer any medication without written permission** from the parents and a pediatrician.
- If it is a prescription medication, the information recorded by the pharmacy on the label identifying the medication is proof of the physician's authorization. Parents who want a drug administered to their child must then complete an authorization form containing all necessary information. This sheet will be recorded in the medications' register of the school. Only medications provided by parents can be administered. The label on the item containing the medication must indicate the child's name, product name, expiration date, dosage and duration of treatment.
- However, homeopathic granules of arnica, arnica cream, Merfen and dressings can be used without medical approval, but **with the written consent of parents**.

● RATES 6-9 YEARS OLD

- By signing the registration or re-registration form, the parents attest reading and accepting the rates included hereafter in the General Conditions.
- Invoices for tuition fees have the following timing (incl. deduction of the registration fee of CHF 1'000.-):
 - **Quarterly:** payment due dates are July 31 (CHF 6'000.-), December 31 (CHF 5'000.-), March 31 (CHF 4'500.-). These deadlines must be strictly observed. The Montessori School Seeds of Knowledge reserves the right to monthly billing if partial payments were to be found, even retroactively. Monthly billing includes charging an additional 3% of the total amount of the tuition.
 - **Annual:** a discount of 3% calculated on the amount of the tuition is applied to an annual payment of school fees recorded at the latest on July 31(CHF 15'000.-). Should the payment not be registered before or on that date, the Montessori School Seeds of Knowledge reserves the right to cancel the rebate and to invoice quarterly.



• **RATES 9-12 YEARS OLD**

- By signing the registration or re-registration form, the parents attest reading and accepting the rates included hereafter in the General Conditions.
- Invoices for tuition fees have the following timing (incl. deduction of the registration fee of CHF 1'000.-):
 - **Quarterly:** payment due dates are July 31(CHF 6'500.-), December 31 (CHF 5'000.-), March 31 (CHF 4'000.-). These deadlines must be strictly observed. The Montessori School Seeds of Knowledge reserves the right to monthly billing if partial payments were to be found, even retroactively. Monthly billing includes charging an additional 3% of the total amount of the tuition.
 - **Annual:** a discount of 3% calculated on the amount of the tuition is applied to an annual payment of school fees recorded at the latest on July 31 (CHF 15'005.-). Should the payment not be registered before or on that date, the Montessori School Seeds of Knowledge reserves the right to cancel the rebate and to invoice quarterly.

Annual tuition fee for first primary school cycle: 6-9 y.o.

Attendance	Annual tuition	School supplies
Without lunch	CHF 14'800.-	CHF 70.-
With lunch	CHF 16'500.-	CHF 70.-

Annual tuition fee for second primary school cycle: 9-12 y.o.

Attendance	Annual tuition	School supplies
Without lunch	CHF 15'800.-	CHF 70.-
With lunch	CHF 17'500.-	CHF 70.-

Monitored Meals

Attendance	Schedule	Price
3 meals/week	12h00-13h30	CHF 1'700.-/ year
2 meals/week	12h00-13h30	CHF 1'120.-/ year
1 meal/week	12h00-13h30	CHF 560.- /year
1 meal ticket	12h00-13h30	CHF 12.-



Rates for after-school workshops

Day	Schedule	Price
Monday	16h00-18h00	CHF 60.- (snack+workshop)
Tuesday	16h00-18h00	CHF 60.- (snack+workshop)
Wednesday	N/A	
Thursday	16h00-18h00	CHF 60.- (snack+workshop)
Friday	N/A	

Rates in the event of belatedness

- Parents must pick up their child before or at 18:00. In case of delay, parents must inform the school. A fee of CHF 10.- for any delay after 18:15 will be charged to cover expenses incurred to retain a person responsible for the child waiting in school.

☉ LAW AND JURISDICTION

- Only Swiss law is applicable to reports arising from these General Conditions and the financial contracts relating thereto, regardless of the location of the home of the parents or of the holders of parental authority.
- The place of jurisdiction shall be Lausanne, Switzerland

☉ BANKING RELATION

UBS SA
Case postale
CH-1260 Nyon

IBAN CH57 002208228 5832 0201 B
Account no. 228-583202.01B
BIC UBSWCHZH80A